

## WHO KNOWS THIRTEEN?

A Jewish New Year Greeting Card from New York, 1910



1 How many different languages are written on the card?

2 How many stages of life can you see in the image?

3 How old is the boy at the top of the stairs?



Answer to Q1

+



Answer to Q2

=



Answer to Q3

Do you send Jewish New Year cards to anyone? If so, to whom?

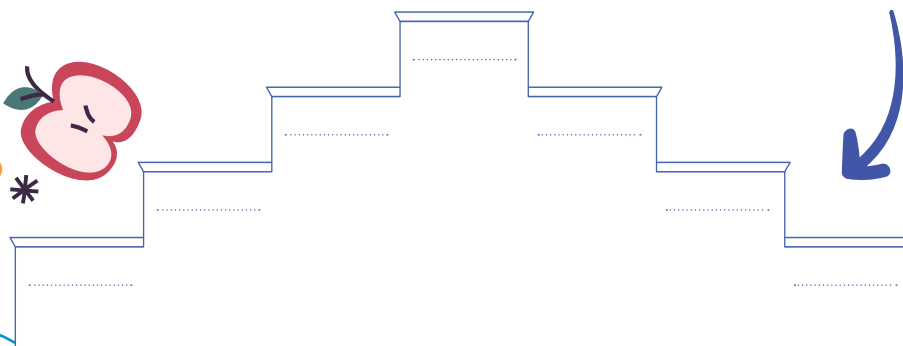
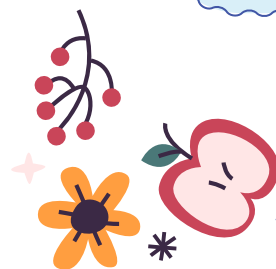
- 1 \_\_\_\_\_
- 2 \_\_\_\_\_
- 3 \_\_\_\_\_



Take a look at some Jewish New Year (Shana Tova) cards that were printed in the first year of the new State of Israel →



Draw or write important milestones in your life. On the left side, record milestones that you have celebrated over the last year. On the right side, plot those that you will be marking in the coming year.



# ROSH HASHANAH FAMILY ACTIVITIES

## SAY CHEESE!

A Jewish New Year Greeting Card from Tel Aviv, 1930



Look at the people in the center.  
**What do you think their relationship is?**  
**Why do you think they dressed up for the photo?**

The card also shows images of pioneers farming, working, and building the Land of Israel. **Do you think you would have enjoyed being a pioneer?**  
**Who are the pioneers of today?**

**Ask everyone in your family to take this personality test to discover which Jewish festival they are!** →



**FIND-A-WORD!**  
We have translated the Hebrew words from the greeting card into English. Now it is your turn to find these English words hidden inside the puzzle!  
**Shana Tova, Tel Aviv, Land, Israel, Build, Galilee**

T	E	L	A	V	I	V	L	E	D	U	O
N	P	I	W	U	E	D	Y	V	Q	T	J
Z	S	B	T	I	S	R	A	E	L	R	P
L	A	N	D	T	B	U	I	L	D	S	R
A	H	S	H	A	N	A	T	O	V	A	Z
P	K	Y	H	U	D	B	C	G	I	Y	A
V	R	E	L	G	A	L	I	L	E	E	D
N	A	M	F	C	W	P	H	Q	W	X	B

**Create your own Jewish New Year card** depicting your family and your community. What pictures will you include? What message do you want to convey about your community? Add a family photograph and then send it to a loved one!



send it to a loved one!

